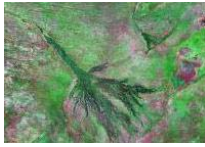


Harry Oppenheimer **Okavango Research Centre**
expert services in natural resources management from
laboratories, field stations, library and natural
collections in Maun, Botswana



Land and Water: the science of landscape *hydrological and biogeochemical analysis • biogeography • land cover analysis • paleo-environmental reconstruction • Geographic Information Systems • water and air quality*



Ecosystems : understanding interdependencies *biodiversity • population dynamics • environmental change • wetland ecology • ecosystems monitoring*



Governance : sharing resources fairly *land use planning • public participation • transboundary resources management • policy frameworks • institutional design*



Livelihoods: supporting people in communities *natural resource economics • social surveys • teaching and training • action research*



Tourism: the value of visitors *ecotourism planning • tourism surveys • cultural tourism*



UNIVERSITY
of
BOTSWANA

University of Botswana
Harry Oppenheimer Okavango Research Centre
Private Bag 285, Maun, Botswana
267-686-1833

iramberg@orc.ub.bw www.orc.ub.bw